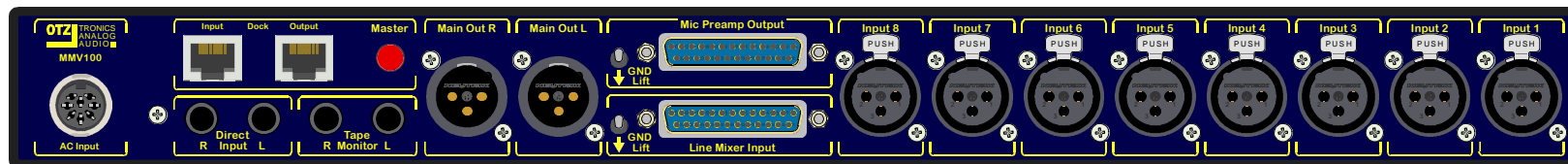


MMV 100 8-CHANNEL MIC PREAMP / MIXER



MMV 100 8-CHANNEL MIC PREAMP / MIXER

The right combination for on-location recordings!
The MMV 100 allows for recordings with up to 8 microphones while simultaneously offering multiple monitoring facilities.

Microphone Inputs (8 identical Channels):
Mic Input on XLR/F connectors,
Elektronically balanced Input stages,
Phantom Power switchable (with LED Control),
Input Gain 6 - 60 dB,
Level Display -40 / -20 / 0 dB /+20.

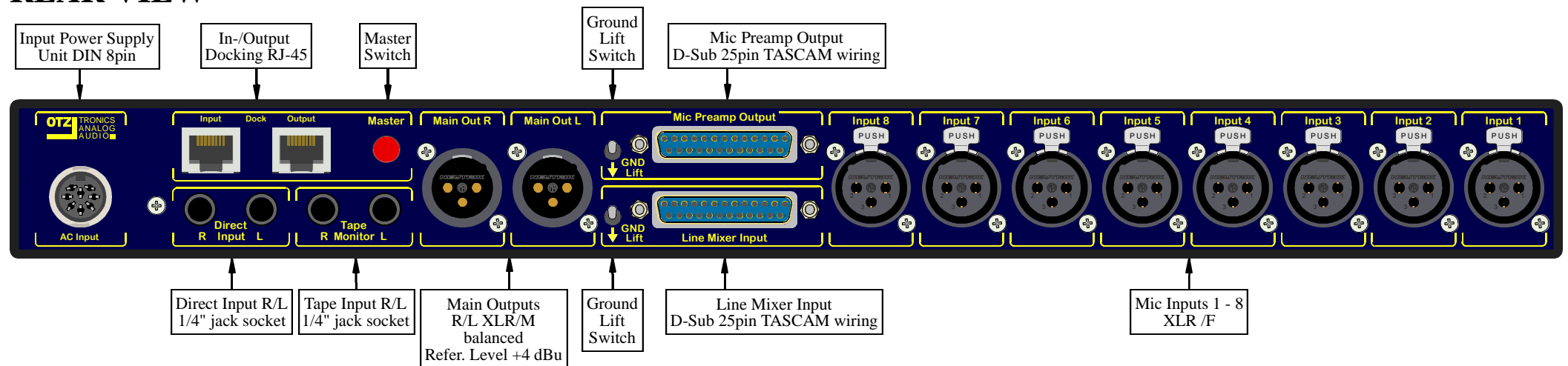
Mixer (8 identical Channels):
each with Level Control, Pan Pot and PFL Switch.

Monitoring / Master Section:
L/R Main Mix and Monitoring Level Controls,
PFL Activity Control LED (lit, if at least one of the PFL switches is depressed),
Tape Monitor Switch,
1/4" jack socket for monitoring purposes (e.g. headphones).

Preamp Output and Mixer Input connectors are D-Sub 25 pin acc. TASCAM wiring. Separate Ground Lift Switches provided for In- and Output.
L/R Main Outputs on XLR/M connectors, Tape Monitor Input and additional Direct Input on 1/4" jack sockets.

Multiple units might be docked to work as one mixer. A single unit must always be operated with the Master Switch depressed. In Docking Mode, the Master Switches must be released except for the one in the Master unit.

REAR VIEW



MMV 100 SPECIFICATIONS:

Circuitry optimized for high headroom and wide frequency response with excellent signal-to-noise ratio over gain:

SNR:	66 dB Gain	117,4 dBqp I/P
(Source 200 Ohm,	54	117,2
Load 100 kOhm)	42	117,1
	30	115,2

Max. Input Level: +22 dBu

Max. Output Level: +28 dBu

Frequency Response: +/- 1 dB 20 Hz bis 30 kHz

Phase Response:

+10 to -30 degrees

Power Supply:

external PSU AC 230 V 50/60 Hz

Dimensions (LxWxH):

483 x 260 x 44 mm (19" 1 U)

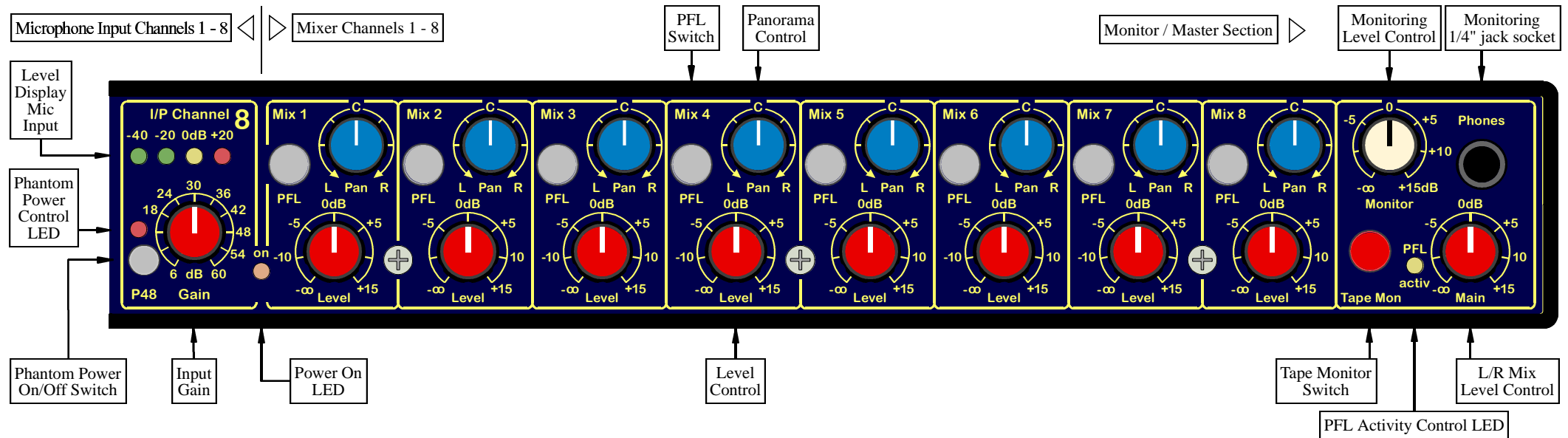
Weight:

Version 1: 3,3 kg (PSU 1,6 kg)

Version 2: 3,5 kg (PSU 1,6 kg)

Version 3: 4,6 kg (PSU 1,6 kg)

FRONT VIEW (Right part of the 19" unit, Input Channels 1 - 8 identical)

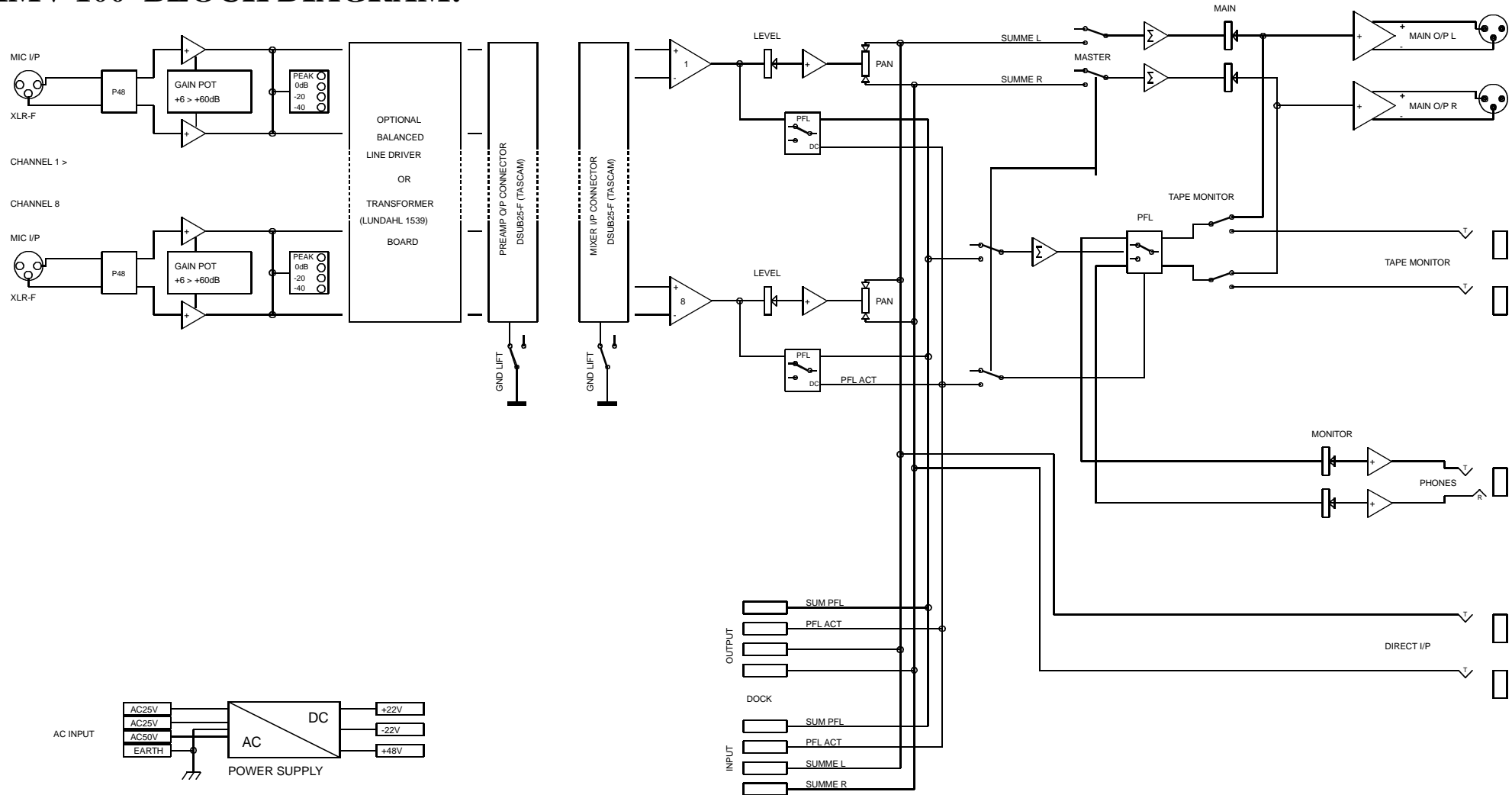


MMV 100 AVAILABLE VERSIONS:

3 Versions with different output stages are available:

- 1.) Direct output: to be wired directly to balanced inputs**
- 2.) Buffered output: for longer cable runs and unbalanced inputs**
- 3.) Transformer output: balanced isolated output for all purposes**

MMV 100 BLOCK DIAGRAM:



Otztronic Analog Audio Fon +49 2833 92651 Fax +49 2833 92652 Mail support@otztronic.com